

# **Sh. L. N. Hindu College, Rohtak (Haryana)**

**Affiliated to M.D. University, Rohtak**

**A Govt. Aided Post Graduate Co-Educational College Accredited by NAAC B Grade**



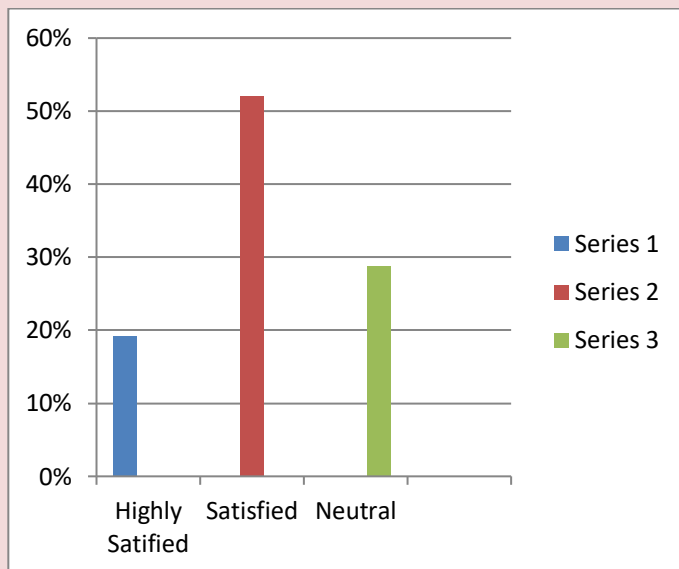
## **Evaluation of Students' Feedback For the session 2022-23**

# Sh. L. N. Hindu College, Rohtak (Haryana)

Affiliated to M.D. University, Rohtak

A Govt. Aided Post Graduate Co-Educational College Accredited by NAAC B Grade

## 1) Overall content & design of curriculum



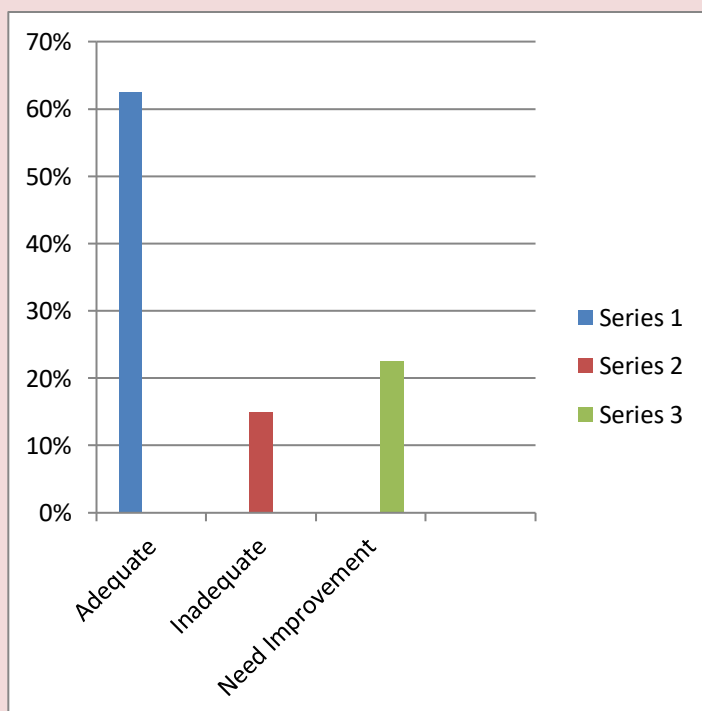
### Observation:

- 52% of students expressed satisfaction with the overall content in the design of the curriculum.

### Action Taken:

- The institutions acknowledges this feedback and will continue to review and improve the curriculum to meet student needs.

## 2) The syllabus/Course Curriculum of the program you pursued was:



### Observation:

- 62.5% of students found the syllabus and course curriculum of the program to be adequate.

### Action Taken:

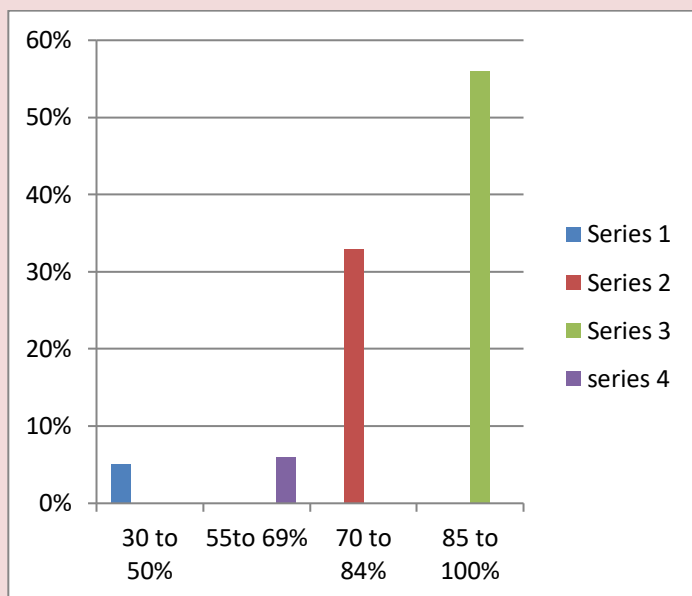
- The institutions appreciates this positive feedback and aims to maintain a relevant and comprehensive syllabus.

# Sh. L. N. Hindu College, Rohtak (Haryana)

Affiliated to M.D. University, Rohtak

A Govt. Aided Post Graduate Co-Educational College Accredited by NAAC B Grade

## 3) How much of the syllabus was covered in the class?



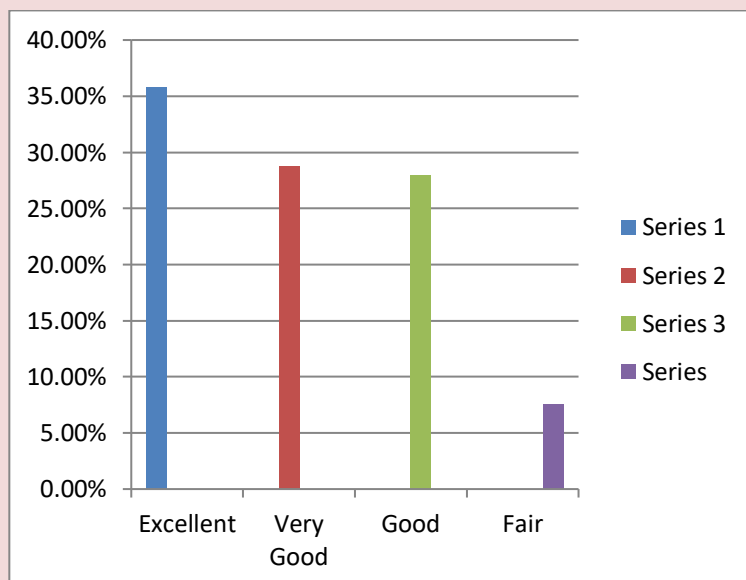
### Observation:

- More than 56% of students agreed that 85 to 100% of the syllabus was timely covered in the class.

### Action Taken:

- The institution recognizes the importance of timely coverage and will continue to monitor syllabus delivery.

## 4) The teacher's approach to teaching can Best be described as:



### Observation:

- 38.5% of students consider the teachers' approach to be excellent.

### Action Taken:

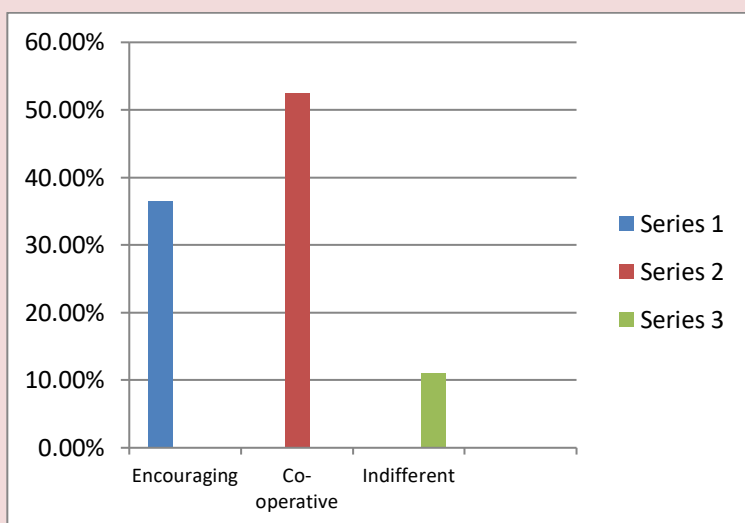
- The institution values this feedback and encourages teachers to maintain an effective teaching approach.

# Sh. L. N. Hindu College, Rohtak (Haryana)

Affiliated to M.D. University, Rohtak

A Govt. Aided Post Graduate Co-Educational College Accredited by NAAC B Grade

## 5) What was the attitude of teachers towards the Extra-Curricular activities ?



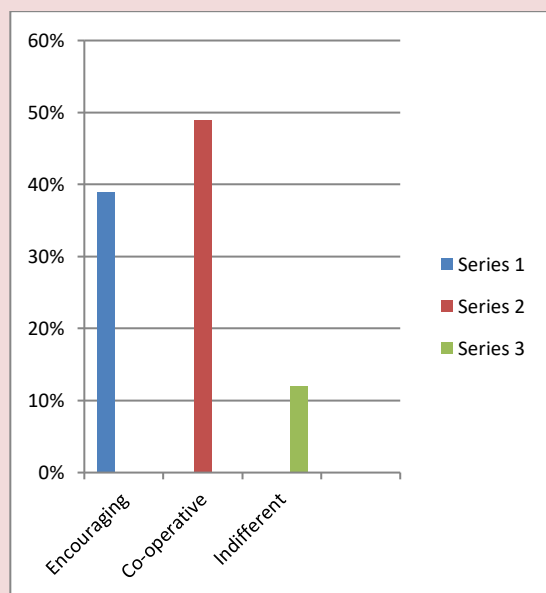
### Observation:

- 52.5% of students observed a cooperative attitude from both students and teachers towards extra-curricular activities.

### Action Taken:

- The institution promotes a holistic learning environment that includes extra-curricular participation.

## 6) Teachers inform you about your expected Competencies, course outcomes and program outcomes :



### Observation:

- More than 70% of students agreed that teachers inform students about course outcomes and program outcome.

### Action Taken:

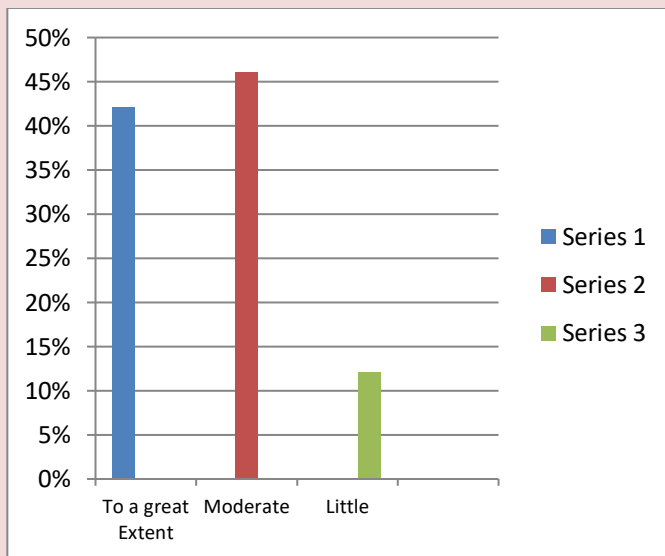
- The institution values this feedback and encourages teachers to maintain that they inform students about course outcome, program outcome every year .

# Sh. L. N. Hindu College, Rohtak (Haryana)

Affiliated to M.D. University, Rohtak

A Govt. Aided Post Graduate Co-Educational College Accredited by NAAC B Grade

## 7) The college/teacher uses student centric methods such as experiential learning, participative learning



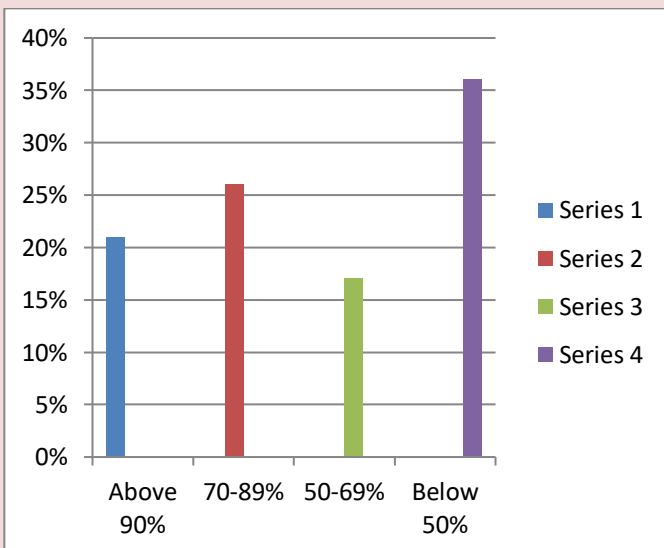
### Observation:

- More than 80% of students believe that teachers use student-centric methods and participative learning methodologies to enhance the learning experience.

### Action Taken:

- The institution will continue to foster student engagement and active learning.

## 8) What percentage of teachers use ICT tools Such as LCD projector , Multimedia etc. while teaching:



### Observation:

- 50 % of students, teachers use ICT tools.

### Action Taken:

- This indicates a positive trend towards technology integration in education.

# Sh. L. N. Hindu College, Rohtak (Haryana)

Affiliated to M.D. University, Rohtak

A Govt. Aided Post Graduate Co-Educational College Accredited by NAAC B Grade

## 9) Were the laboratories adequately equipped with latest apparatus and properly maintained?



### Observation:

- 80% of students agreed that our laboratories are well equipped.

### Action Taken:

- This reflects the college's commitment to providing quality practical learning experience.

## 10) What is your opinion about the library material in library?



### Observation:

- More than 85% of students are satisfied with library area and the material provided. sports facilities

### Action Taken:

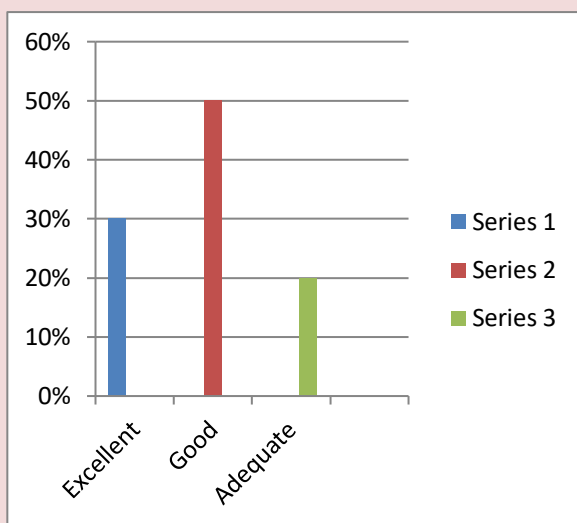
- More emphasis on update the college library with more books.

# Sh. L. N. Hindu College, Rohtak (Haryana)

Affiliated to M.D. University, Rohtak

A Govt. Aided Post Graduate Co-Educational College Accredited by NAAC B Grade

## 11) Sports facilities & opportunities ,to excel in sports, available in the college is?



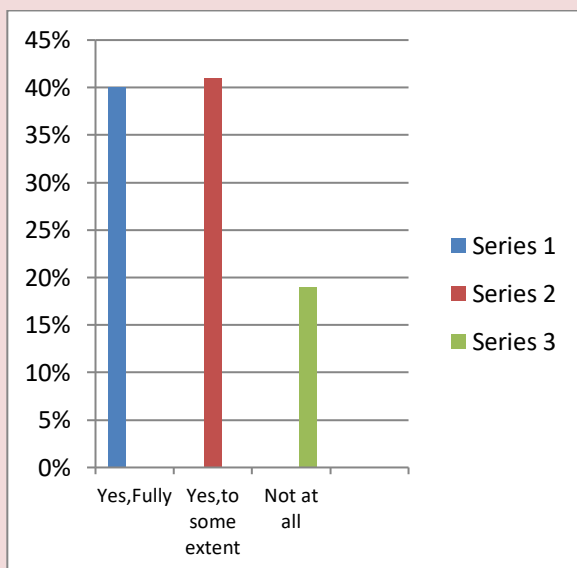
### Observation:

- 50% of students are satisfied with sports facilities and opportunities.

### Action Taken:

- While this is decent, there is room for improvement.

## 12) Were you provided with training in use of computer/ICT (Information & Communication Technology)?



### Observation:

- More than 80% of students satisfied that teachers provided training in use of computer/ICT.

### Action Taken:

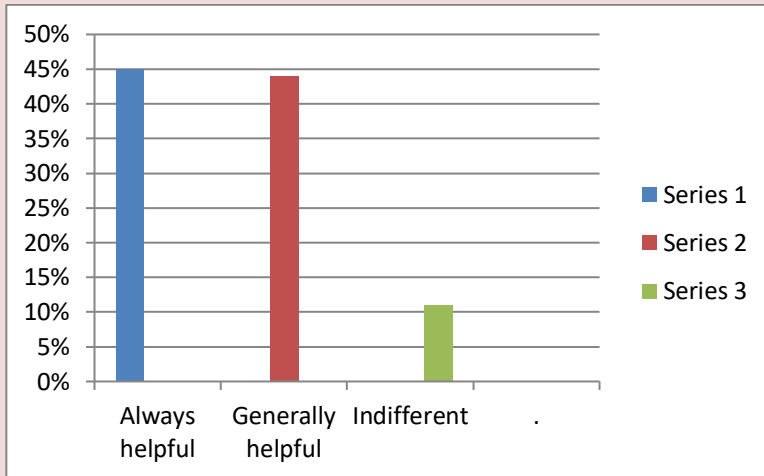
- This indicate a positive trend towards technology integration in education.

# Sh. L. N. Hindu College, Rohtak (Haryana)

Affiliated to M.D. University, Rohtak

A Govt. Aided Post Graduate Co-Educational College Accredited by NAAC B Grade

## 13) How do you find the institution's administration?



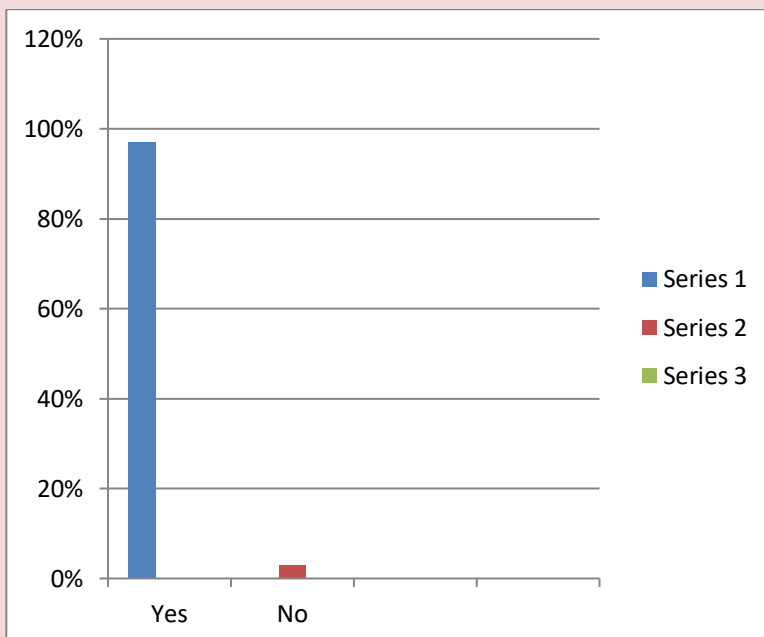
### Observation:

- More than 90% of students agreed that college institution's administration is helpful.

### Action Taken:

- This indicate a positive attitude towards institution's administration.

## 14) Reading Area in Library is available:



### Observation:

- More than 90% of students are satisfied with reading area in library.

### Action Taken:

- The library seems to be meeting their needs effectively.

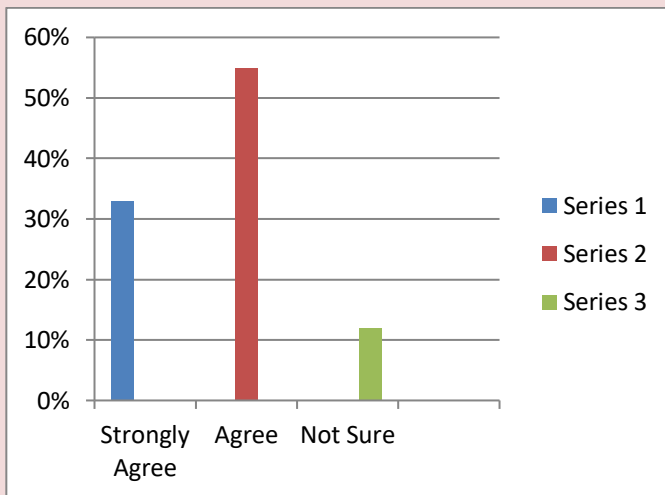


# Sh. L. N. Hindu College, Rohtak (Haryana)

Affiliated to M.D. University, Rohtak

A Govt. Aided Post Graduate Co-Educational College Accredited by NAAC B Grade

## 15) The overall quality of college regarding Teaching-Learning process, infrastructure and student support services is very good:



### Observation:

- To enhance teaching and learning , the college organizes games , quizzes and emotional intelligence talks.

### Action Taken:

- More emphasis on Teaching-Learning process, Practical knowledge, practical teaching, infrastructure